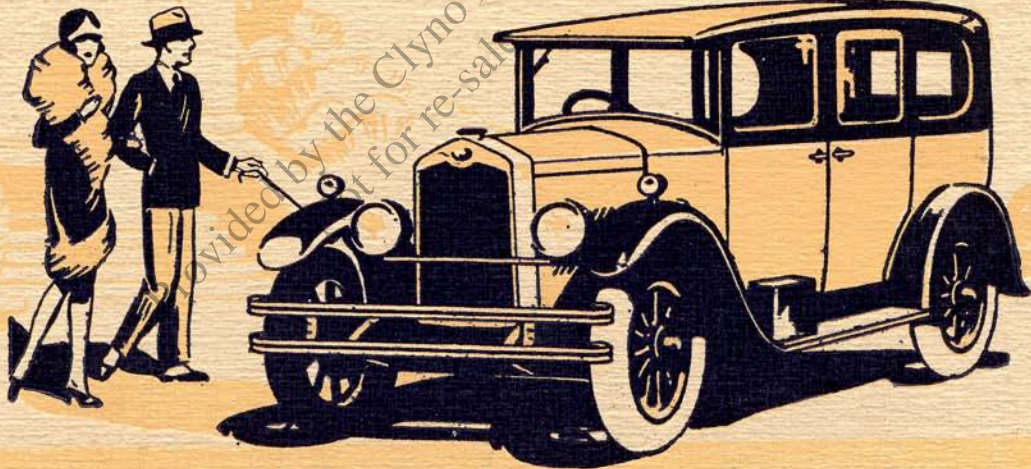


# CLYNO CARS



1929.

THIS LIST CANCELS  
ALL PREVIOUS ISSUES.

October 11th, 1928.

# CLYNO CARS

9 H.P. &  
12.35 H.P.



THE CLYNO ENGINEERING CO. (1922) LTD. WOLVERHAMPTON



## CLYNO CARS for 1929.

**W**ITH their 1929 programme the Clyno Company have again set up a new standard of motoring which cannot fail to enhance the widespread and ever increasing popularity of Clyno Cars.

Wonderful value for money has always been the Clyno motto and as will be seen from the following specification and illustrations supreme motor car value has again been achieved. The chassis retain all the excellent features of previous Clyno productions already so well-known and appreciated by Clyno owners all over the world. Full appreciation, however, can only be secured by personal inspection. A trial run in any Clyno model will at once reveal a wonderful reserve of smooth flexible power, and this coupled with finger light and unequalled steering, simple gear

change and powerful four-wheel braking, all go to make driving a pleasure.

First-class and very much improved British coachbuilt bodies equal to those only usually found on cars at much higher prices are a special feature for the 1929 season.

The material, finish and workmanship are of the best obtainable and will, we are sure, make the owner not only satisfied but proud of his car.

The Clyno Company therefore present their 1929 programme with every confidence, knowing that the public will recognise the remarkable new value offered, which as always is outstanding, and will again strongly support the British enterprise which has made this manufacturing triumph possible.

## 12.35 H.P. MECHANICAL SPECIFICATION.

WHEEL BASE.—9' 0". TRACK.—4' 0".

**ENGINE, 12.35 H.P.**—Four-cylinder monobloc, water-cooled, large diameter side-by-side valves, detachable head, large diameter balanced three-bearing crankshaft, high tensile steel. Camshaft entirely enclosed in special oil compartment giving a very silent operation to the latest type mushroom head tappets.  
Bore, 69.5 m.m. Stroke, 105 m.m. C.C. 1,593.3.  
R.A.C. Rating, 11.9. Tax, £12.

**LUBRICATION.**—By pressure feed from gear pump driven from camshaft, forcing oil to timing gear and main bearings. A large oil filter is fitted in the sump and also in the oil filler, which is situated high up in an extremely accessible position.

**IGNITION.**—Lucas high tension magneto.

**CARBURETTER.**—Cox Atmos.

**COOLING.**—Thermo Syphon. Large attractive nickel radiator, with big head of water, designed to give perfect circulation.

**CLUTCH.**—Large diameter fabric-lined internal cone clutch giving an exceptionally light and smooth action and being free from the necessity for adjustment of any kind.

**GEAR BOX.**—Gear change of Clyno patented design. Three speeds forward and reverse. Gear box is fitted on the forward end of torque tube, and anchored on the centre cross member of chassis by a patent housing, which automatically takes up wear. A special locking device is provided which makes it impossible for two gears to be engaged at once.

**FINAL DRIVE.**—Through propeller shaft totally enclosed in torque tube to spiral bevel in rear axle. Speedometer drive is taken direct from propeller shaft through suitable gearing.

**BACK AXLE.**—Fitted with large diameter bearings, exceptionally strong nickel steel shafts and special Clyno design of spiral bevel and differential set, making an extremely silent and efficient unit. Special provision is made to prevent oil working through axle casing on to the brake shoes.

**CHASSIS AND SUSPENSION.**—Heavy section. Chassis frame is of very rigid construction, inswept at the front end, and fitted with dumb irons. Rear of frame upswept and carried well back beyond axle. Semi-elliptic front springs designed to withstand the high stresses imposed by front wheel brakes. Single cantilever rear springs sliding on hardened steel rollers in housings on back axle casing.



## 12.35 H.P. MECHANICAL SPECIFICATION—continued.

**STEERING.**—Special Clyno design by worm and nut enclosed in oil-tight steering box. We claim that this is the finest and lightest steering fitted to any light car on the market at the present time. It is admitted by experts to be exceptional. Front wheel brakes and low pressure tyres, which spoil the steering on some cars have no effect whatever on the Clyno steering.

**FRONT AXLE.**—High tensile stamped steel axle of very pleasing appearance, most up-to-date design, and giving ample ground clearance. The beam is of "H" section between the spring pads and of scientifically correct oval section at the ends to withstand the braking stresses.

**FOUR WHEEL BRAKES.**—Of Clyno patented design—are very smooth and powerful in action. The correct and almost universal adopted practice of distributing the greater percentage of the braking effort on the front wheel brakes makes the cars easy to control and eliminates skidding at all speeds on greasy roads. Internal expanding shoes working on 12 in. diameter, easily detachable brake drums, and fitted with Ferodo linings of ample width are used. These are operated by controls, made from high tensile steel rods with facilities for very easy adjustment

**WHEELS.**—Detachable pressed steel artillery.

**TYRES.**—Dunlop reinforced.

**CONTROLS.**—Foot control to four wheel brakes, clutch and accelerator. Hand controls on steering column to carburetter and magneto. Strangler control to carburetter from instrument board. Right-hand gear change and hand brake lever very conveniently situated. All foot pedals adjustable.

**LIGHTING.**—Lucas 12-volt, 5-lamp set. Separate dynamo generator, with adjustable enclosed chain drive running in an oil bath, very powerful dipping and swivelling head lamp reflector with pneumatic operation and automatic switch to off-side head lamp.

**STARTING.**—Powerful 12-volt Lucas motor, a separate unit having ample power to start the engine from cold. Extra large battery carried on running board.

**PETROL TANK.**—Capacity, five gallons; fitted in scuttle. Gravity feed. Filler cap conveniently situated under bonnet.

**De-Luxe Models**—Capacity nine gallons, Autovac feed to carburetter from tank at rear of car suspended on extension of frame.





## 12.35 H.P. EQUIPMENT.

Lucas Electric Starter.  
Smith Speedometer.  
Smith Eight-day Clock.  
Rigid Side Screens (detachable on open cars).  
Lucas 12-volt Electric Lighting (5 Lamps) with dipping reflector and automatic switch to off-side head-lamps.  
Spare Wheel and Tyre.  
Chassis Grease Gun.  
Tool Kit.  
Slow-running Throttle Adjustment.  
Spare Wheel Bracket and Centre.  
Jack and Handle.

Wheel Brace.  
Tyre Inflator.  
Rubber Moulding Strip on Windscreen.  
Receptacle on Instrument Board.  
Container of Wakefield Oil.  
Number Plates.  
Petrol Gauge (not on De-Luxe Models).  
Map Pockets.  
Air Strangler.  
Hood Envelope (on open Models).  
Ammeter and Switches.  
Ignition and Mixture Controls.  
Detachable Seat Squab.  
Automatic Screen Wiper.

Tool Receptacle.  
Shock Absorbers.  
Carburetter Filter.  
Receptacle for Side Screens (on open Models).  
Bumpers.  
Licence Holder.  
Spring Gaiters.  
Driving Mirror.  
Electric Horn.  
Oil Pressure Gauge.  
Blinds to rear window on Saloons  
Winding Windows on Saloons.

### THE FOLLOWING EXTRA EQUIPMENT IS INCLUDED ON 12.35 H.P. DE-LUXE MODELS:—

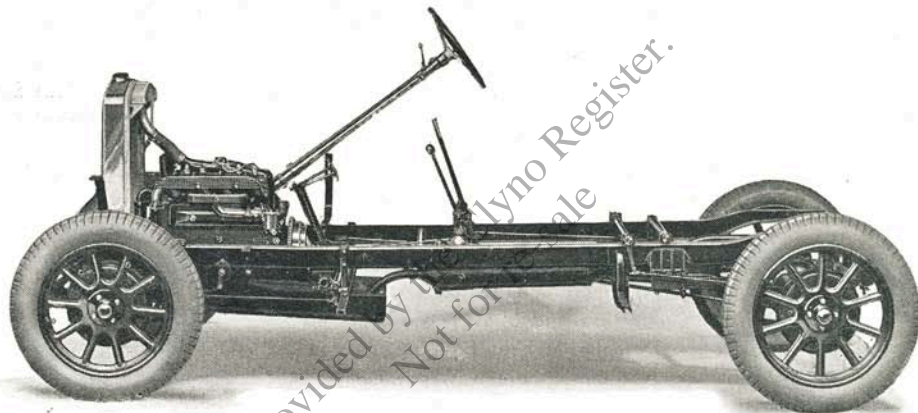
Locks on doors.  
Instrument lighted from behind panel.  
Autovac and Tank at rear of car.  
Driver operated Rear Blind on Saloons.  
2-Level Petrol Tap.

Rope Pulls on Saloons.  
Luggage Carrier.  
Smoker's Companion and Cigar Lighter.  
Parcel net on Saloons.

Wire Wheels.  
Trunk containing two large Suit-cases.  
Rug Rail.

} On OLYMPIC DE-LUXE MODEL only.

## 12.35 H.P. CHASSIS.



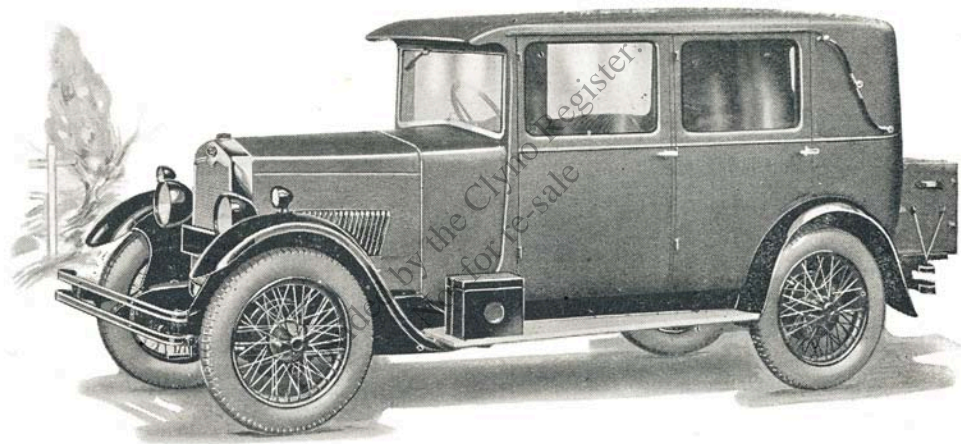
Price - - - £125.

„ De-Luxe Model - £150.

Which include five lamps, speedometer, clock, shock absorbers, spare wheel and tyre, tool kit and grease gun, number plates, bonnet, petrol tank, spring gaiters and bonnet fasteners.

Wire Wheels £5 extra, on all 12.35 h.p. Models.

# 12.35 H.P. DE-LUXE OLYMPIC SALOON.



Price - - **£275.**

With Acetex Unsplintable Glass - **£285.**



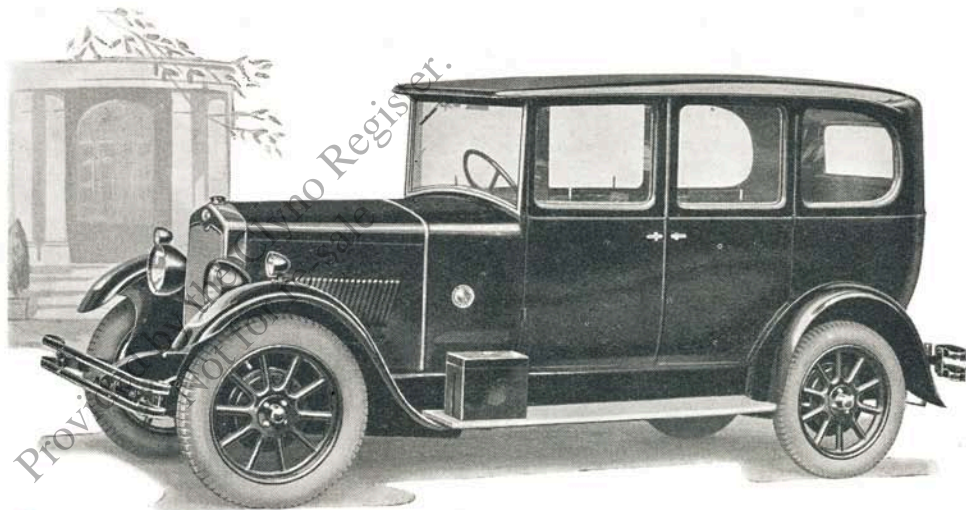
## 12.35 H.P. DE-LUXE SALOON.

**F**OUR door, six light, four-seater with dome back body, winding windows in doors. Instantly adjustable front seat. Single panel adjustable windscreen.

Accessible combined tool box and foot-rest in rear compartment which in use adds to the comfort of the rear seat passengers.

Coachwork in Brown, Blue or Maroon Cellulose with leather upholstery to match.

Overall Length - - 13' 4"  
.. Width - - 5' 3"  
.. Height - - 5' 11"  
Ground clearance - 8"  
Weight unladen - - 21 cwt.



Price - - £250.

With Acetex Unsplintable Glass - £262 10s.

## 12.35 H.P. DE-LUXE 4-SEATER TOURER.

**F**OUR door body with adjustable front seat. This body is wheel-arched, ensuring pleasing lines and ample accommodation in the rear seats. Complete all-weather equipment with rigid side curtains is provided and the hood is covered in best quality black leather cloth. The double panel windscreen is slightly raked and adjustable.

Coachwork (Fabric Model) in Maroon with leather upholstery to match.

Coachwork (Coachbuilt Model) in Blue, Brown or Maroon Cellulose with real leather upholstery to match.

Overall Length,

Hood down - 13' 7"

Hood up - 13' 4"

.. Width - 5' 3"

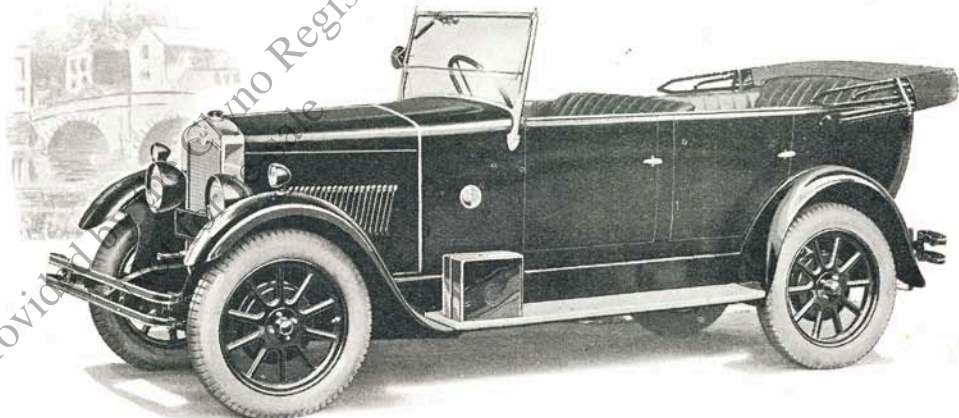
.. Height,

Hood down - 5' 6"

Hood up - 6' 3"

Ground clearance - 8"

Weight unladen - 20 cwt.



Price - - **£215.**

With Acetex Unsplintable Glass - **£220.**

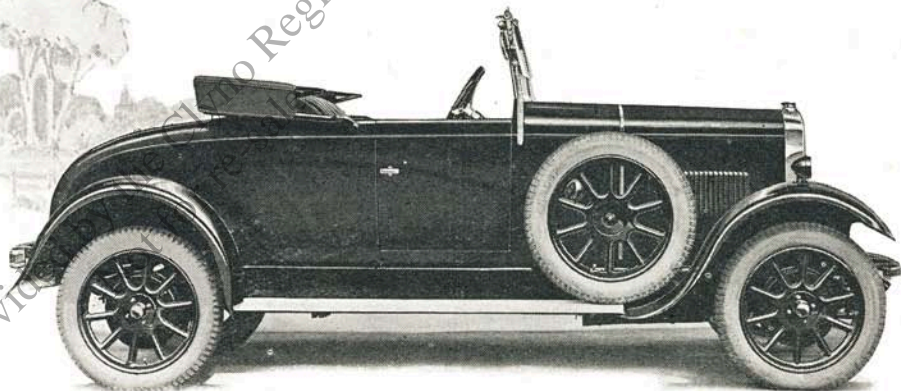
## 12.35 H.P. DE-LUXE 2-SEATER.

**T**WO door, very roomy, wheel-arched body with large, sunk, fully upholstered dickey seat with double lid, the front lid is made to swing back forming the seat. This arrangement gives a very spacious compartment ensuring excellent leg room and comfort. Complete all-weather equipment with rigid side curtains is provided. The hood is covered in best quality black leather cloth. The slightly raked double panel windscreen is adjustable.

Coachwork in duotone Cellulose, Brown, Blue or Maroon, to choice with leather upholstery to match.

Overall Length	- -	13' 4"
.. Width	- -	5' 3"
.. Height,		
Hood up	-	5' 6"
Hood down	-	5' 2"
Ground clearance	-	8"
Weight unladen	- -	18 cwt.

Provided by Photo Register.



Price - - £200.

With Acetex Unsplintable Glass - £205.



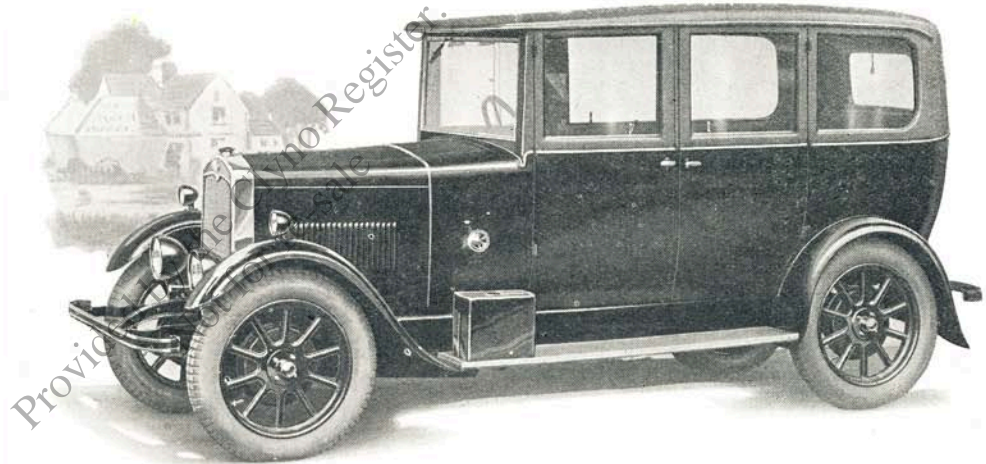
## 12.35 H.P. SALOON.

**F**OUR door, six light, four-seater dome back body, winding windows in doors. Bucket type adjustable front seats, single panel adjustable windscreen.

Coachwork (Fabric Models), Blue with leather cloth upholstery to match.

Coachwork (Coachbuilt), Blue Maroon or Brown Cellulose with leather cloth upholstery to match.

Overall Length - - 13' 1"  
.. Width - - 5' 1"  
.. Height - - 5' 10"  
Ground clearance - 8½"  
Weight unladen - - 20 cwt.



Price - - £200.  
With Acetex Unsplintable Glass - £207 10s.

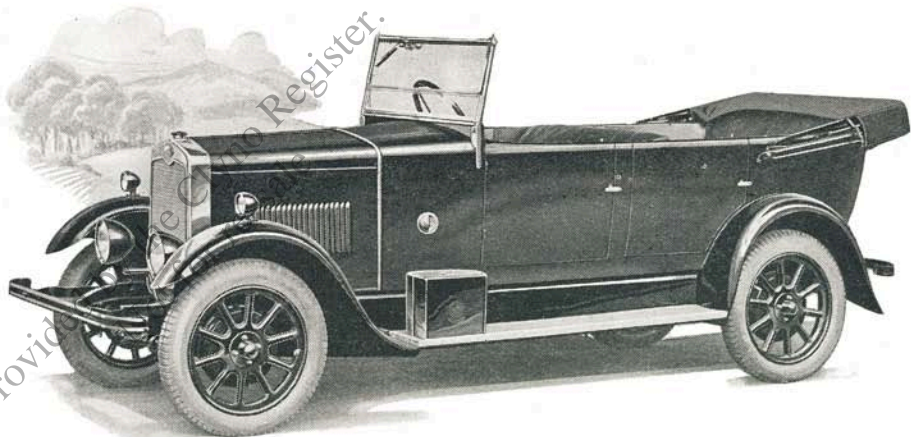
## 12.35 H.P. 4-SEATER TOURER.

**F**OUR door body with adjustable front seat. This body is wheel-arched, ensuring pleasing lines and ample accommodation in the rear seats. Complete all-weather equipment with rigid side curtains is provided and the hood is covered in best quality black leather cloth. The double panel windscreen is slightly raked and adjustable.

Coachwork (Fabric Model) in Blue with leather cloth upholstery to match.

Coachwork (Coachbuilt Model) in Blue Cellulose with real leather upholstery to match.

Overall Length,  
 Hood down 13' 10"  
 Hood up - 13' 1"  
 " Width - - 5' 1"  
 " Height,  
 Hood down 5' 3"  
 Hood up - 6' 0"  
 Ground clearance - 8½"  
 Weight unladen - - 17¼ cwt.



Price (Fabric) - - - - - £172 10 0  
 „ \* (Coachbuilt) with real leather  
 upholstery - - - - - £185 0 0  
 \*With Acetex Unsplintable Glass - £187 10 0

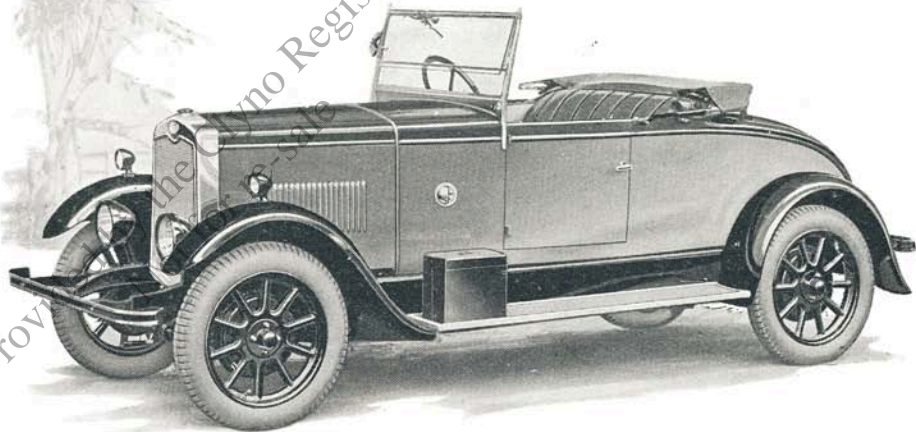
**T**WO door, very roomy, wheel-arched body with large, sunk, fully upholstered dickey seat. Complete all-weather equipment with rigid side curtains is provided. The hood is covered in best quality black leather cloth. The slightly raked double panel windscreen is adjustable.

The beautiful lines of this body together with its ample accommodation and attractive choice of colour schemes will appeal to the most fastidious of buyers.

Coachwork in duotone Cellulose—Brown, Blue or Maroon, to choice with leather cloth upholstery to match.

Overall Length - - 13' 0"  
" Width - - 5' 1"  
" Height.  
Hood down - 5' 2"  
Hood up - 5' 7"  
Ground clearance - 8½"  
Weight unladen - - 16½ cwt.

## 12.35 H.P. COACHBUILT 2-SEATER.



Price - - **£160.**

With Acetex Unsplintable Glass - **£162 10s.**



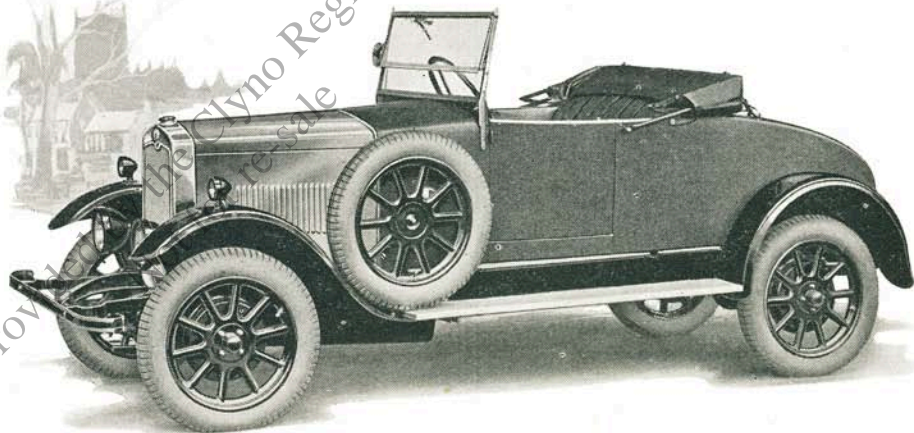
**T**WO door, roomy, fabric covered body with large, sunk, fully upholstered dickey seat. Complete all-weather equipment with rigid side curtains is provided. The hood is covered in best quality black leather cloth. The slightly raked double panel windscreen is adjustable.

This model has been retained owing to its extreme popularity during the past season and will appeal to the ever growing number of fabric body enthusiasts.

Coachwork in Blue Fabric with leather cloth upholstery to match.

Overall Length	- -	13' 0"
.. Width	- -	5' 1"
.. Height,		
Hood down	- -	5' 2"
Hood up	- -	5' 7"
Ground clearance	- -	8½"
Weight unladen	- -	16½ cwt.

## 12.35 H.P. FABRIC 2-SEATER.



Price - £157 10s.



## 9 H.P. MECHANICAL SPECIFICATION.

**WHEEL BASE.**—7' 3". **TRACK.**—3' 9".

**ENGINE, 9 H.P.**—Four-cylinder, monobloc, water cooled, side-by-side valves, flat follower tappets, detachable head, high tensile crankshaft, helical gear timing drive.  
Bore, 58 m.m. Stroke, 90 m.m. C.C. 950.  
R.A.C. Rating, 8.3 H.P. Tax, £9.

**LUBRICATION.**—By plunger pump submerged in sump and driven direct from rear end of camshaft by a connecting link, forcing oil to the main bearings, timing gear and troughs under the big ends. A large oil filter is fitted in the sump below the troughs, and a small oil filter is also fitted in the oil filler which is situated high up in an accessible position. An oil level rod is conveniently placed at the side of the engine.

**IGNITION.**—Lucas coil situated high up in an accessible position.

**CARBURETTER.**—Cox Atmos.

**CLUTCH.**—Large diameter fabric lined single plate clutch completely enclosed in flywheel bell-housing, giving exceptionally light and smooth action.

**GEAR BOX.**—Three speeds forward and reverse. Unit construction with the engine mounted on the flywheel bell-housing. Central control is provided with a special locking device making it impossible for two gears to be engaged at once.

**TRANSMISSION.**—The drive from the gear box to the back axle is through a large diameter propeller shaft with Hardy fabric discs mounted on a special centring device which eliminates vibration and gives long life to the flexible

couplings. Special provision is made for lubrication of the splined shafts and the centring device direct from the gear box and back axle bearing housings.

**BACK AXLE.**—This is of the semi-floating type mounted on large diameter bearings, and is provided with exceptionally strong nickel chrome steel shafts. The spiral bevel drive and differential of Clyno special design makes a very silent and efficient unit. Special provision is made to prevent oil working through the axle and differential casing on to the brake shoes.

**CHASSIS AND SUSPENSION.**—The chassis frame is of exceptionally sturdy construction, having three heavy section cross members rivetted in position. The forward end which is narrowed down carries the usual dumb irons for the semi-elliptic front springs, while the rear end is widened out to carry the body-work and the single cantilever rear springs. The rear springs are attached to the frame by high tensile steel bolts, and to the axle by hardened and ground steel shackle pins. A torque member is also provided. On account of the low centre of gravity combined with the sturdy construction of the car, the road holding qualities are exceptional.

**STEERING.**—Of the well-known Clyno design, by worm and nut enclosed in an oil tight steering box. We claim that this is the finest and lightest steering fitted to any light car on the market at the present time—it is admitted by experts to be exceptional. Front wheel brakes and low pressure tyres, which spoil the steering on some cars, have no effect whatever on the Clyno.



## 9 H.P. MECHANICAL SPECIFICATION—continued.

**FRONT AXLE.**—High tensile stamped steel axle of pleasing appearance and most up-to-date design is fitted. The beam is of "H" section between the spring pads, and of scientifically correct oval section at the ends to withstand the braking stresses.

**FOUR WHEEL BRAKES.**—Of the renowned Clyno patented design are fitted. The correct, and almost universal adopted practice of distributing the greater percentage of the braking effort on the front wheel brakes makes the car easy to control and eliminates skidding at all speeds on greasy roads, besides giving an extremely powerful action. Internal expanding shoes lined with Ferodo bonded asbestos brake lining, operate inside steel brake drums which may be easily detached for inspection purposes. The connections to the operating mechanism are by means of high tensile steel rods provided with facilities for very easy adjustment. Combined with the ease of control and marvellous road holding qualities, the powerful brakes make the Clyno the safest small car on the road to-day.

**WHEELS.**—Detachable pressed steel artillery wheels with four bolt fixings. Artillery wheels while being exceptionally light, are by reason of their method of construction, extremely sturdy and undoubtedly enhance the appearance of the car.

**TYRES.**—Dunlop cord, low pressure tyres (27" x 4" diam.)

**CONTROLS.**—Foot and hand control brakes. Foot control to clutch and accelerator. Hand controls on steering column to carburetter and ignition. Strangler control to carburetter from instrument board. The centre gear change and right-hand brake lever are very conveniently situated.

**COOLING.**—Thermo-syphon. A large and efficient radiator of striking design, with special type of film block giving a very neat appearance, is fitted. Water tanks of large capacity are provided at top and bottom of the film block.

**LIGHTING.**—Lucas 6-volt set. Dynamo generator, and large capacity battery in ebonite case.

**STARTING.**—An extremely powerful 6-volt Lucas motor is fitted as a separate unit in an accessible position on the engine, the drive giving ample power to start the engine from cold.

**PETROL TANK.**—Capacity  $3\frac{1}{4}$  galls., fitted in a convenient position under the bonnet, being attached to a special platform which comprises part of the dashboard.



## 9 H.P. EQUIPMENT.

Shock Absorbers.  
Lucas Electric Lighting (5 Lamps).  
Dash Lamp.  
Automatic Screen Wiper.  
Lucas Electric Self Starter.  
Smith Speedometer.  
Electric Horn.  
Rear Window Blind on Saloon.  
Spare Wheel and Tyre.  
Chassis Grease Gun.  
Tool Kit.  
Slow-running Throttle Adjustment.

Spare Wheel Bracket and Centre.  
Jack and Handle.  
Wheel Brace.  
Tyre Inflator.  
Receptacle on Instrument Board.  
Container of Wakefield Oil.  
Number Plates.  
Petrol Gauge Dipper Stick.  
Patent Slam Locks.  
Map Pockets.  
Air Strangler.  
Ammeter and Switches.

Ignition and Mixture Controls.  
Detachable Seat Squab.  
Tool Receptacle.  
Carburetter Filter.  
Rigid Side Screens (on open Models).  
Receptacle for Side Screens  
(on open Models).  
Hood Envelope (on open Models).  
Bumpers.  
Licence Holder.  
Driving Mirror.

THE FOLLOWING EXTRA EQUIPMENT IS INCLUDED ON 9 H.P. DE-LUXE SALOON:—

Smith Eight-day Clock.  
Leather upholstery.

Driver operated Rear Blind.  
Dipping Headlight Reflector.

Locks on Doors.  
Roof Light.

## 9 H.P. CENTURY EQUIPMENT.

Lucas Electric Lighting (3 Lamps).  
Screen Wiper.  
Lucas Electric Self Starter.  
Horn.  
Rigid Side Screens (detachable).  
Spare Wheel and Tyre.  
Chassis Grease Gun.

Tool Kit.  
Slow-running Throttle Adjustment.  
Spare Wheel Bracket and Centre.  
Wheel Brace.  
Tyre Inflator.  
Container of Wakefield Oil.  
Number Plates.

Air Strangler.  
Ammeter and Switches.  
Ignition and Mixture Controls.  
Detachable Seat Squab.  
Carburetter Filter.  
Jack and Handle.

**9 H.P. CHASSIS.**



**Price - - £100.**

which includes five lamps, speedometer, clock, shock absorbers, spare wheel and tyre, tool kit and grease gun, number plates, bonnet, petrol tank, bonnet fasteners.

Wire Wheels £4 extra, on all 9 h.p. Models.

## 9 H.P. CENTURY MODEL.

**F**ABRIC body, bucket type front seats (near side folds and tips). Complete all-weather equipment with rigid side screens, double panel adjustable windscreen. The tool kit is accommodated under front seats and is instantly accessible.

Coachwork in Brown Fabric with leather cloth upholstery to match.

Overall Length,

Hood down 11' 0"

Hood up - 10' 2"

.. Width - - 4' 8½"

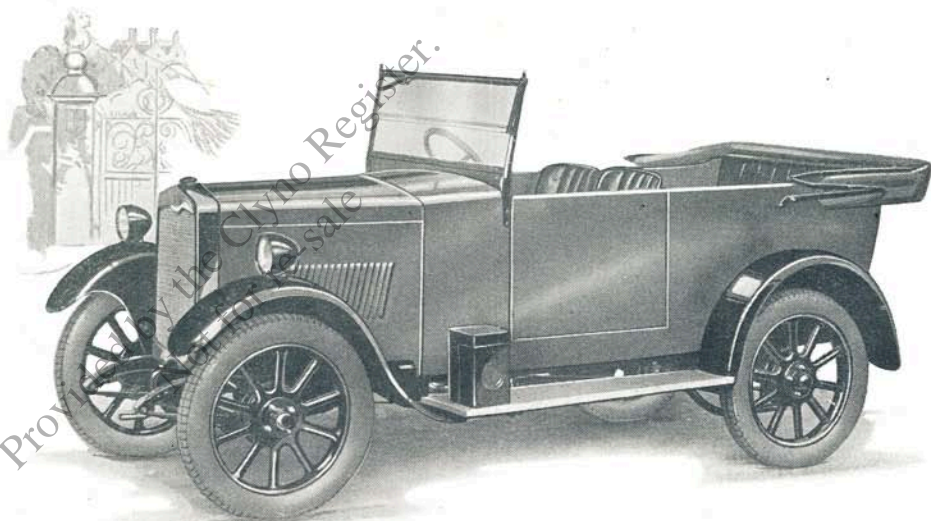
.. Height,

Hood down 5' 0"

Hood up - 5' 8"

Ground clearance - 9¼"

Weight unladen - - 12¼ cwt.



Price - £112 10s.

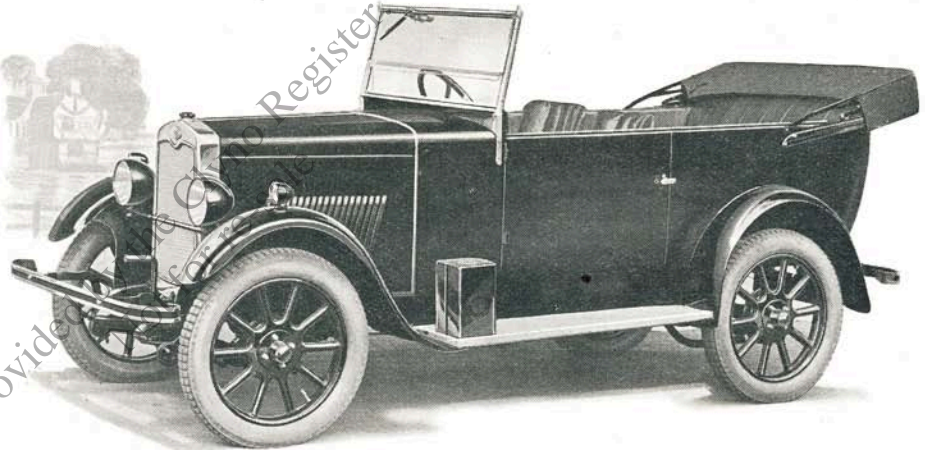


## 9 H.P. 4-SEATER TOURER.

**C**OACHBUILT, two-door 4-seater body. Bucket type front seats, both of which fold and tip, give very easy access to all seats. The driver's seat is adjustable. The body is wheel-arched giving ample leg room. Complete all-weather equipment with rigid side curtains is provided and the hood is covered in best quality black leather cloth. The double panel windscreen is adjustable.

Coachwork in Brown, Blue or Maroon Cellulose to choice with leather cloth upholstery to match.

Overall Length,	
Hood down	11' 9"
Hood up -	11' 4"
" Width -	4' 8½"
" Height,	
Hood down	5' 2"
Hood up -	5' 9"
Ground clearance -	9¼"
Weight unladen - -	13¼ cwt.



Price - - £130.

With Acetex Unsplintable Glass - £132.

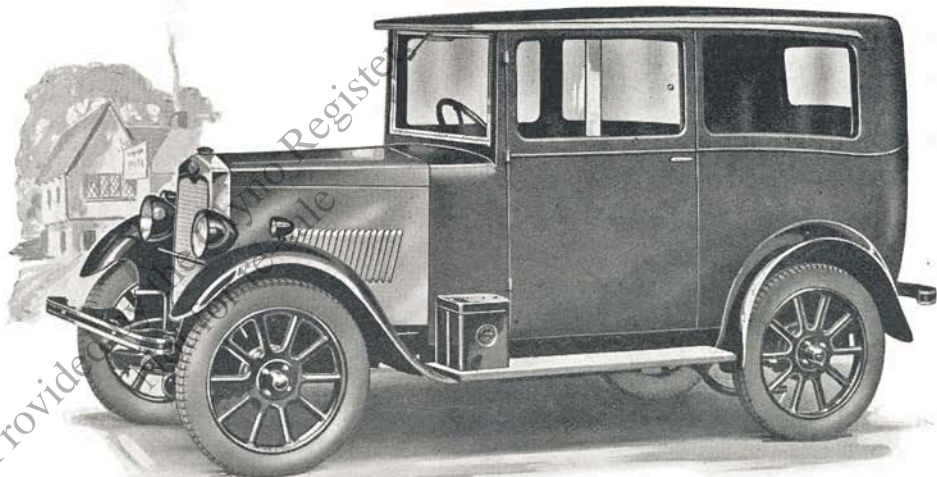
**T**WO door, four light, Four-seater Fabric body which seats four adults in comfort. Bucket type front seats which fold and tip giving very easy access to all seats.

The body is wheel-arched giving wide and comfortable rear seats and ample leg room is provided in both front and rear compartments. The tool kit is accommodated under the front seats and is instantly accessible. The single panel windscreen is adjustable and sliding windows are fitted.

Coachwork in Brown or Blue with leather cloth upholstery to match.

Overall Length - - 11' 4"  
.. Width - - 4' 8½"  
.. Height - - 5' 6"  
Ground clearance - - 9¼"  
Weight unladen - - 13¼ cwt.

## 9 H.P. FABRIC SALOON.



Price - - £140.

With Acetex Unsplintable Glass - £146 10s.

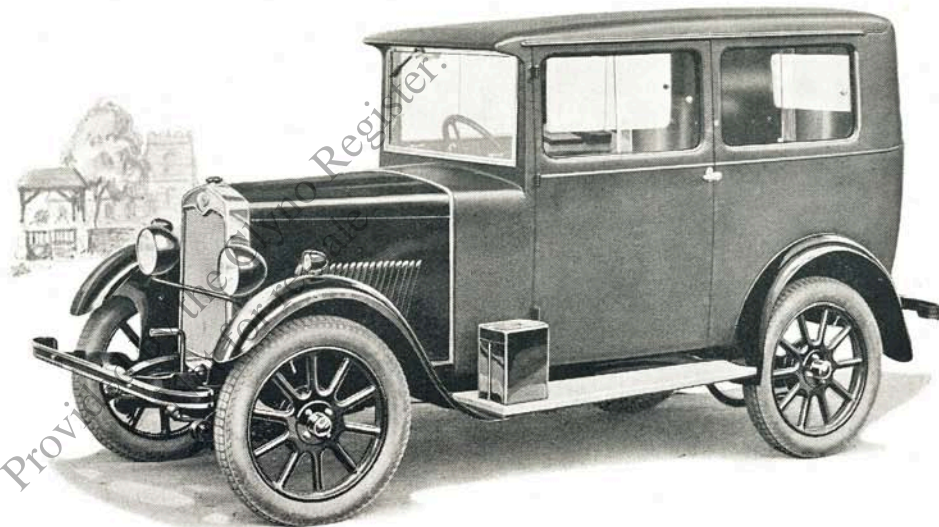
**T**WO door, four light, Four-seater Saloon which seats four adults in comfort. Bucket type front seats, both of which fold and tip, giving very easy access to all seats. The driver's seat is adjustable and this, together with the adjustable control pedals, make the driving position suitable for any driver.

The tool kit is accommodated under the front seats and is instantly accessible. The single panel windscreen is adjustable and four sliding windows are fitted.

Coachwork in Brown, Blue and Maroon Cellulose or Fabric to choice with real leather upholstery to match.

Overall Length	-	-	11' 4"
.. Width	-	-	4' 8½"
.. Height	-	-	5' 6½"
Ground clearance	-	-	9½"
Weight unladen	-	-	13½ cwt.

## 9 H.P. DE-LUXE SALOON.



Price - - £160.

With Acetex Unsplintable Glass - £166 10s.



## TERMS OF SALE.

**CONDITIONS OF PURCHASE.**—Purchasers of Clyno Cars are hereby informed that such cars are sold subject only to the terms of the guarantee and to the general conditions of sale herein contained, and on the distinct understanding that the vehicle purchased shall not be exhibited, either directly or indirectly, at any exhibition or show held in the United Kingdom other than an exhibition or show held or approved by the Society of Motor Manufacturers and Traders for the exhibition of motor goods by its Bondsignors. Any breach of this provision shall render the purchaser liable to indemnify the Company in respect of their liability to the Society aforesaid to pay the Company any sum or sums which may be demanded from the Company by the aforesaid Society or its Council on appeal may award.

**PAYMENT.**—Net cash. One-third of the total purchase money to accompany order. Balance to be paid on advice that the car is ready for delivery.

**DELIVERY.**—The prices quoted in the Company's catalogue are for delivery at the Company's works at Wolverhampton, in the County of Stafford, in England, and are strictly net on the above-mentioned terms.

Any time of delivery named in the Company's contracts or correspondence is absolutely contingent upon war, strikes, riots, lock-outs, trade disputes, accidents, fire, delay or failure of sub-contractors to complete their contracts, or any other unforeseen circumstances, and should delivery be delayed in consequence of any of the foregoing contingencies the Company shall not be responsible for any damages caused by such delay.

Cars will be delivered to purchasers by the Company's authorised dealers at a charge to be arrived at calculated on the basis of sixpence per mile freightage.

**SPARE PARTS.**—The Company endeavours to keep in stock for immediate delivery a full series of all parts for its vehicles that are liable to wear or to damage by accident. When ordering spare parts the identification number of the parts should be quoted if possible (see separate spare parts list), but in every case the chassis and engine numbers of the car, for which such parts are required, must be given. Full instructions concerning this matter will be found in the Spare Parts List issued by the Company. The Company reserves the right at any time to alter as may be considered advantageous or necessary any part that may be returned.

The Company reserves the right to revise without notice the prices and/or specifications as set out in this catalogue.

Any person, firm or company which the Company styles its authorised Main Dealers or Sub-Dealers are not authorised to advertise, incur any debts, or to transact any business whatsoever on behalf of the Company. Nor are they authorised to give any warranty or to make any representations on behalf of the Company other than those contained in the guarantee shown on page 24. The Company reserves the right to hand over orders placed direct with the Company to authorised Main Dealers or Sub-Dealers in the appropriate territories.

The Company does not undertake the fitting of additional accessories of any kind, nor will it deviate from its standard specifications of cars owing to such action interfering with the general work of its factory.

Should the Company cease to manufacture a car of the type or model ordered (whether the estimated date of delivery has arrived or not) the Company shall be at liberty to return the deposit paid on the order of the purchases and declare its contract to be at an end without any further liability. All previous catalogues and terms of any previous guarantee are hereby cancelled.

## GUARANTEE.

CONDITIONS OF GUARANTEE.—Subject to the conditions hereinafter mentioned the goods manufactured by the Company and specified below shall be accepted by the purchaser subject to the following express warranty, which excludes all warranties, conditions and liabilities whatsoever, whether statutory or otherwise, which may exist against the Company but for this provision, viz.:—In the event of any defect being disclosed in any part or parts of the goods and if the part or parts alleged to be defective are returned to the Company's works, carriage paid, within twelve months after delivery, the Company undertakes to examine same and should any fault, due to defective material or workmanship, be found on examination by the Company, it will repair the defective part or supply, free of charge, a new part in place thereof.

The Company's responsibility is limited to the terms of this guarantee, and it shall not be answerable for any contingent or resulting liability, or loss arising through any defects. This guarantee does not relate to defects caused by motor racing, wear and tear, misuse or neglect, or to the defects in any motor, motor vehicle or goods which have been altered after leaving the Company's works, or which have been let out on hire, or the identification numbers or marks on which have been altered or removed. The Company accepts no responsibility for tyres, speedometers or the electrical equipment or other goods not of its own manufacture.

The Clyno Engineering Co (1922), Ltd., issues no warranty of the goods except as stated herein, but desires and expects that customers shall make a thorough examination before purchasing. This warranty is limited to the despatch to the purchaser without charge except for transportation, of the part or parts, whether new or repaired, in exchange for

those acknowledged by the Company to be defective, and is dependant upon the strict observance of the following clauses:

- (a) The purchaser shall at time of purchase personally sign and forward to the Company the card supplied by the Company, and register his name, address, date of purchase, number of car and name and address of Seller with the Company, and shall obtain from the Company a signed copy of this warranty and shall produce same to the Company's representative for inspection in case of any claim being made. This warranty shall not be assigned or transferred to anyone unless the Manufacturer's consent in writing has been first obtained.
- (b) The purchaser shall send to the Company's works such part or parts as are alleged or claimed to be defective promptly on the discovery of the claimed defect. Transportation is to be prepaid by the purchaser, and such part or parts to be properly packed for transit and clearly marked for identification with the name and full address of the owner, and with the number of the vehicle from which the said part or parts were taken.
- (c) The purchaser shall post to the Company at its works, on or before despatch of such part or parts alleged to be defective, a full and complete description of the claim and the reasons therefor.
- (d) The judgment of the Clyno Engineering Co. (1922), Ltd., in all cases of claims shall be final and conclusive, and purchaser agrees to accept its decision on all questions as to defects and to the exchange of part or parts. After the expiration of six days from the despatch of notification of the Company's decision the part or parts submitted may be scrapped or returned carriage forward by the Company.