

# The Clyno Gazette

VOL. I. No. 2.

NOVEMBER, 1925.

ISSUED MONTHLY.



## PRICES:

### 11 H.P.


2-SEATER ..	£162-10
2-SEATER, with F.W.B. ..	£170
OCCASIONAL	
4-SEATER ..	£172-10
4-SEATER, with F.W.B. ..	£180
4-SEATER ..	£182-10
4-SEATER, with F.W.B. ..	£190

### With F.W.B.

"ROYAL"	
2-SEATER ..	£210
"ROYAL"	
4-SEATER ..	£215
4-DOOR SALOON ..	£245

### 13 H.P. with F.W.B.

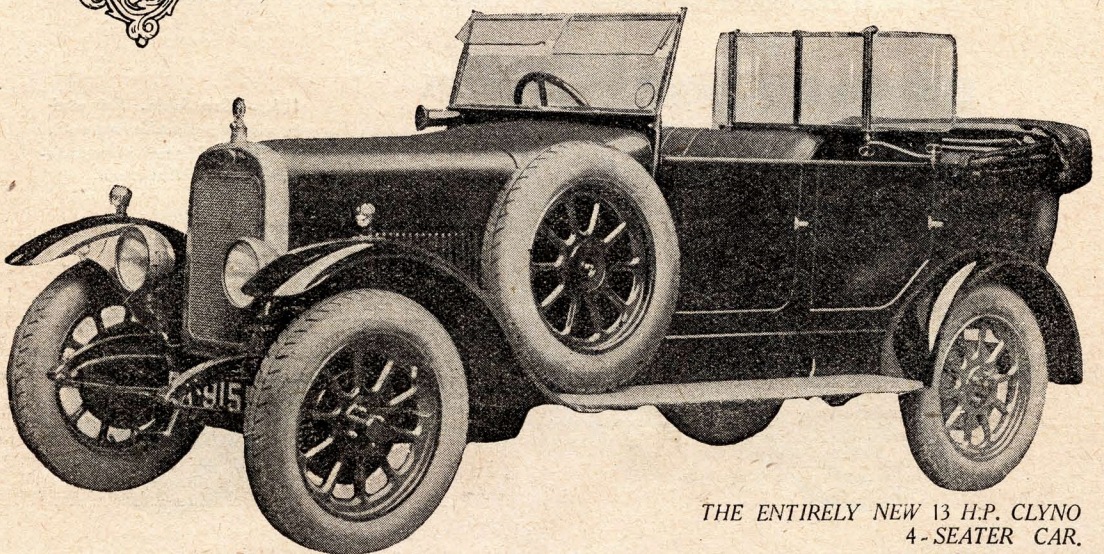
2-SEATER ..	£245
4-SEATER ..	£260
COUPE ..	£285
4-DOOR SALOON ..	£298



*This month we give  
some of the reasons  
for the boom in*

# CLYNO CARS

*Read the following pages :—*



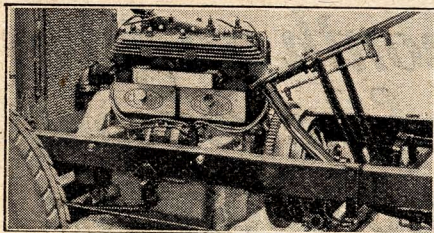
THE ENTIRELY NEW 13 H.P. CLYNO  
4-SEATER CAR.  
PRICE £260



# The Clyno Gazette

## EFFICIENCY, ECONOMY

**T**HE rapid growth in CLYNO Car Sales is probably the most striking success ever recorded in the history of the motor industry.



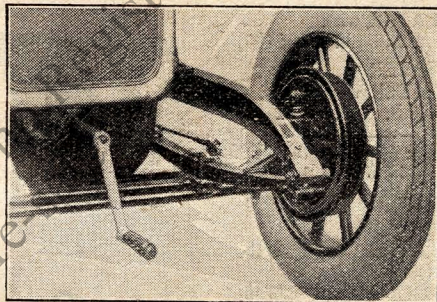
13 h.p. CLYNO Engine.

**E**NGINE EFFICIENCY:—One of the chief reasons of the popularity of CLYNO Cars is the high efficiency of the engines. Actually, the 11 h.p. engine develops over 25 brake h.p. The 13 h.p. engine develops over 34 brake h.p. These figures compare more than favourably with engines of considerably larger capacity. CLYNO engines mean *lower tax and lower petrol consumption.*

**Remember that a large bore and long stroke engine is not essential. What counts is the power developed**

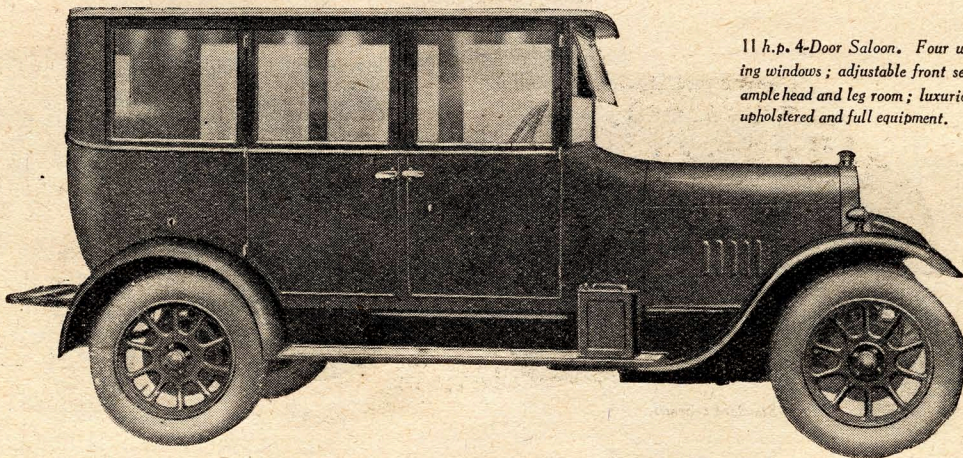
§ **by the engine in comparison to the total weight of the car.**

**F**RONT WHEEL BRAKES:—When you compare CLYNO Cars with other Cars in the same class, compare *all* the essential features. Compare the steering: Clyno steering is extraordinarily light.



*New type front axle with dumb-irons.*

Compare front wheel brakes: the design of the Clyno front wheel brakes is such that full advantage can be taken of them. Braking pressures can be used on CLYNO cars to an extent



11 h.p. 4-Door Saloon. *Four winding windows; adjustable front seats; ample head and leg room; luxuriously upholstered and full equipment.*

THE CLYNO ENGINEERING CO. (1922) Ltd., WOLVERHAMPTON.



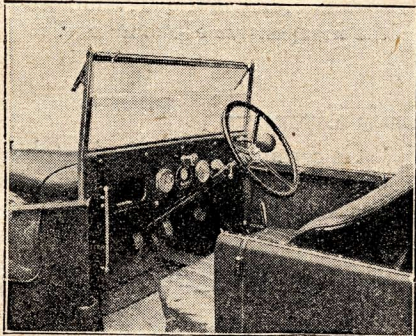
# The Clyno Gazette

## AND INDIVIDUALITY

which few front wheel brakes on other light cars allow.

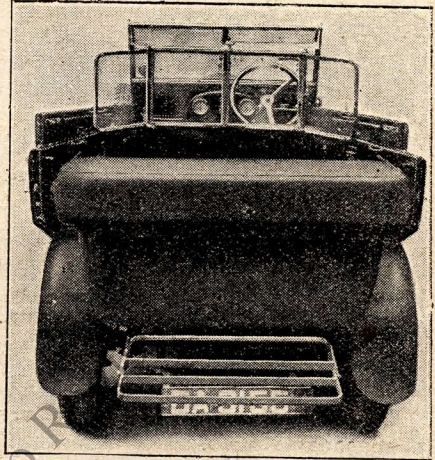
**CLYNO front wheel brakes in no way affect the steering.**

The suspension and road-holding capabilities of the CLYNO are notable features: Remember this in your comparisons.



11 h.p. CLYNO "ROYAL" 4-Seater. Note the comfortable seating, wide door, and completely equipped instrument board.

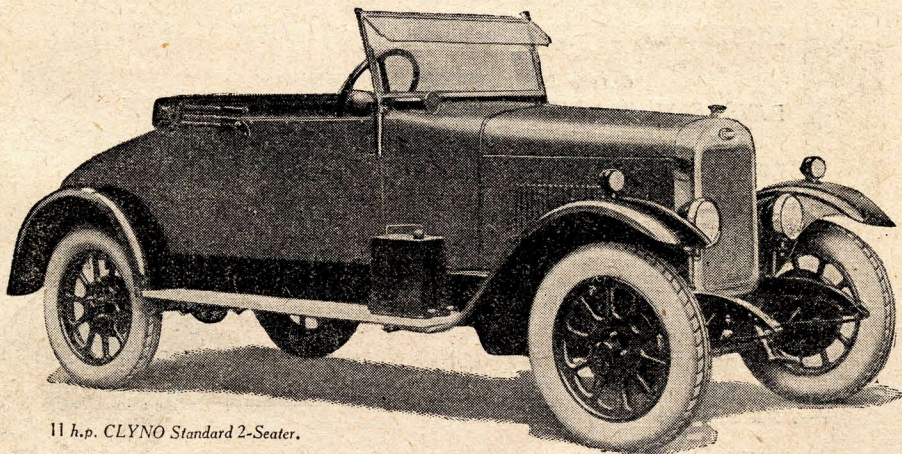
**CONVENIENCE:**—Compare CLYNO cars with others in these particulars: Body accommodation, comfortable seating and leg-room. CLYNO Cars are really roomy. Gear and Brake controls are right-hand. On four-seaters front seats are adjustable.



The 11 h.p. and 13 h.p. 4-Seaters are spacious.

**INDIVIDUALITY:**—CLYNO Cars have individuality; they are "different" because of the pleasing lines of the bodies and the excellently finished coachwork. In the open models there is sheer efficiency in the all-weather equipment. Compare these features too.

Little wonder that CLYNO Cars were the sensation of the Motor Show!



11 h.p. CLYNO Standard 2-Seater.

THE CLYNO ENGINEERING CO (1922) Ltd., WOLVERHAMPTON.



# The Clyno Gazette

## PRESS OPINIONS

### *Autocar*—

" . . . an economical, attractive and serviceable car, offering remarkable value for money."

### *Motor*—

" . . . notable features are the extremely light steering, the convenient position of the right-hand gear-change lever, the adjustable front seats . . . very economical to run."

### *Light Car and Cyclecar*—

" . . . a high-class car at a very reasonable price."

### *Auto*—

" . . . a very remarkable production."

### *Motor Owner*—

" . . . mechanical qualifications . . . truly efficient and satisfactory."

### *Motor World*—

" . . . the equipment is extremely generous and hardly leaves out

anything that the average motorist is likely to require or even to fancy."

### *Daily Mail*—

" . . . wonderful value for money, and provides a striking example of the progress made by the British manufacturer in the development of the inexpensive economy car."

### *Daily Express*—

"It is certainly one of the best things of its kind that has ever been produced in this country."

### *Daily Chronicle*—

" . . . the right car at the right price."

### *Stock Exchange Gazette*—

" . . . steering amazingly light, gear-change is absolutely noiseless . . . the easiest car I have ever driven."

## SCOTTISH MOTOR SHOW, EDINBURGH

NOVEMBER 13—21

STANDS 31 & 32

CLYNO DISTRIBUTORS IN SCOTLAND:

DAVID CARLAW & SONS, LIMITED	- - -	GLASGOW.
MOIR & BAXTER, LIMITED	- - -	EDINBURGH.
DAVID BROWN	- - -	ABERDEEN.

## Standard CLYNO Equipment.

### 11 h.p. MODELS.

8-day Clock, Speedometer, Bulb Horn.  
Rigid Metal Frame Side Screens and Petrol Gauge on F.W.B. Models.  
Electric Horn, Spring Gaiters, Screen Wiper and Dash Lamp additional on Royal and Saloon Models.

### 13 h.p. MODELS.

Self-starter, Smith 8-day Clock, Spare Petrol Can and Holder, Spring Gaiters, Driving Mirror, Luggage Grid on Saloon and 4-Seater, Motor Driven Electric Horn, Bulb Horn, Automatic Screen Wiper, Rigid Metal Frame Side Screens, Dash Lamp, Petrol Gauge, Calometer, Auster Rear Screen (4-Seater), 12 Volt Lighting Set.

THE CLYNO ENGINEERING CO (1922) Ltd., WOLVERHAMPTON.

LONDON Showrooms and Export Department—ROOTES Ltd., 141, New Bond St., W.1.

MANCHESTER: LOOKERS, Ltd.