

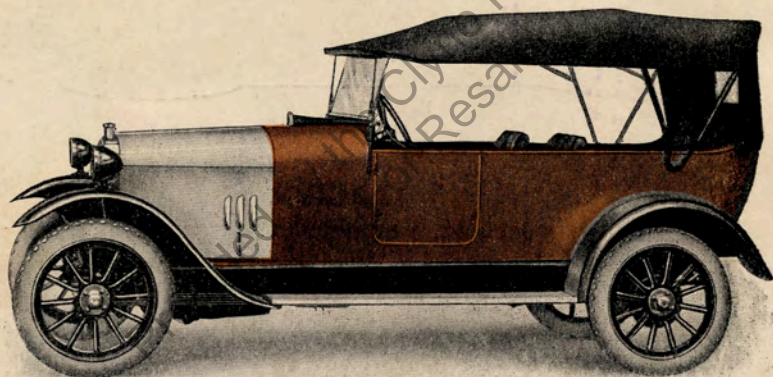


CLYNO LIGHT CARS

10-20 h.p.
FAMILY
MODEL

£ 238

With Starter and
All-weather Equipment.



Manufactured by
The Clyno Engineering Co. (1922) Ltd.
WOLVERHAMPTON.

Directors :

William Smith
(Chairman)

Frank Smith
(Managing Director)

G. E. Stanley.

W. Henderson-
Cleland.



FAME.

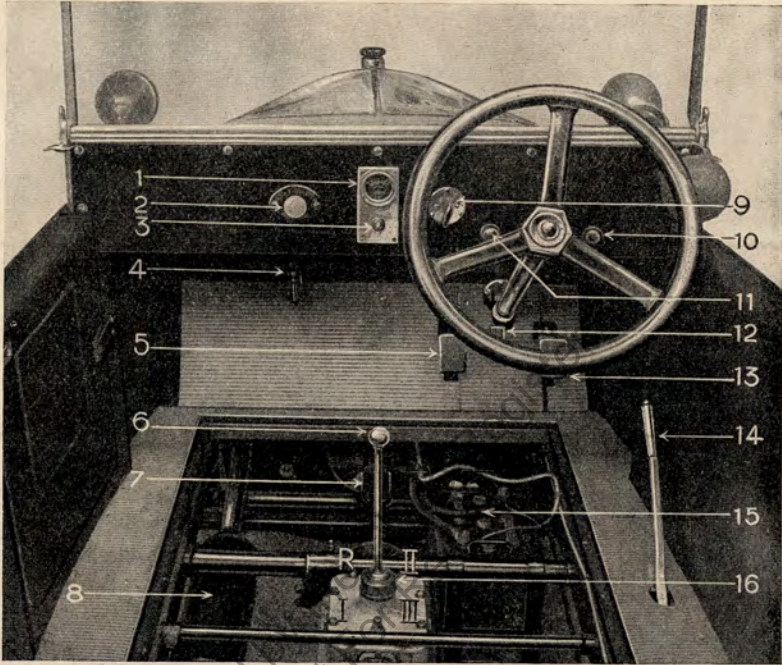
Telephone :

992
(2 lines).

Telegrams :

CLYNO,
Wolverhampton.

LYNO

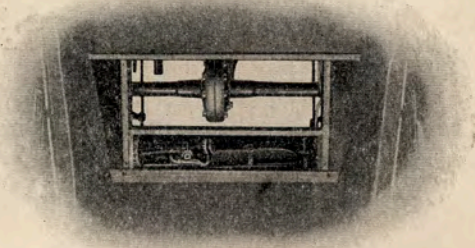


- | | | |
|------------------------|--------------------------|--------------------------|
| 1. Ampermeter. | 7. Clutch Withdrawal | 12. Accelerator Pedal. |
| 2. Starter Switch. | Mechanism. | 13. Brake Pedal. |
| 3. Lighting Switch. | 8. Silencer. | 14. Side Brake Lever. |
| 4. Petrol Tap. | 9. Ignition Switch. | 15. Accumulator. |
| 5. Clutch Pedal. | 10. " Control. | 16. Gear Box Oiling Plug |
| 6. Change Speed Lever. | 11. Carburetter Control. | (in front of Lever). |

GEAR POSITIONS.

I. First Gear. II. Second Gear. III. Top Gear. R. Reverse.

View with back seat removed to show Tools, Tool Box, Back Axle and Oiling Plug (on right).





TERMS OF SALE.

ORDERS . . . Only signed orders accompanied by a deposit of one third will be accepted. All orders for cars, chassis, bodies, or spare parts, are only accepted on the understanding that they will be invoiced at the prices ruling at the time of delivery.

PAYMENT . . . Cash on receipt of invoice, or on notification that the goods are ready for delivery. If the payment shall not be made within five days, we reserve the right of cancelling the order with forfeiture of the deposit.

DELIVERY . . . Shall take place at our Works. Our Agents have the right to charge freightage from our Works to the place of destination. In the event of *non-delivery there shall be no claim for damages*, and the return of such deposit as shall have been paid will cancel the contract without further responsibility being attached to us. A date of delivery given is only an approximate date, and we are not to be held responsible for any delay or non-delivery.

ALTERATIONS IN SPECIFICATIONS AND PRICES .
We reserve the right to alter the price and specification stated at any time without notice.

G U A R A N T E E .

All CLYNO CARS are sold without express or implied guarantee of their fitness or otherwise; but in case of breakage of any part within six months from date of sale, owing to defective material or workmanship, proved to our satisfaction, the defective part shall be repaired, or a new one supplied, free of charge. The part to be returned to us, carriage paid, when claim is made. The six months is from the date of sale by us, but if the Car is sold by our Agent, and it has not been previously used, the period dates from the date of sale by our Agent.

Tyres, electrical fittings, and accessories, not being made by us, are sold without recourse against us under any circumstances.

The term Agent is used in a complimentary sense only, and those firms we style our Agents are not authorised to advertise, incur any debts, or transact any business whatsoever on our account; nor are they authorised to give any warranty or make any representations on our behalf other than those contained in the above guarantee.

The Clyno Engineering Co. (1922) Ltd.
Wolverhampton.

CLYNO

THE LIGHT CAR SUPREME



£238

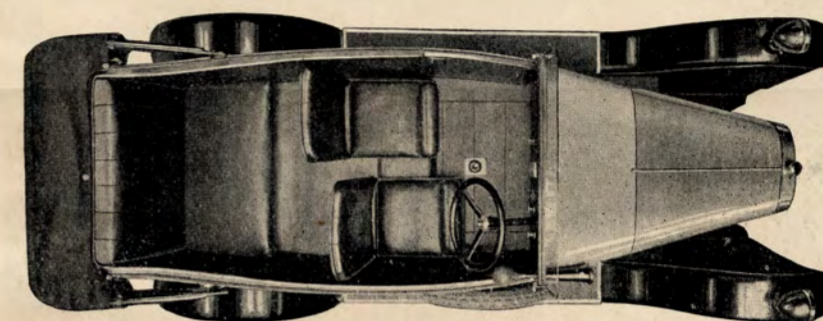
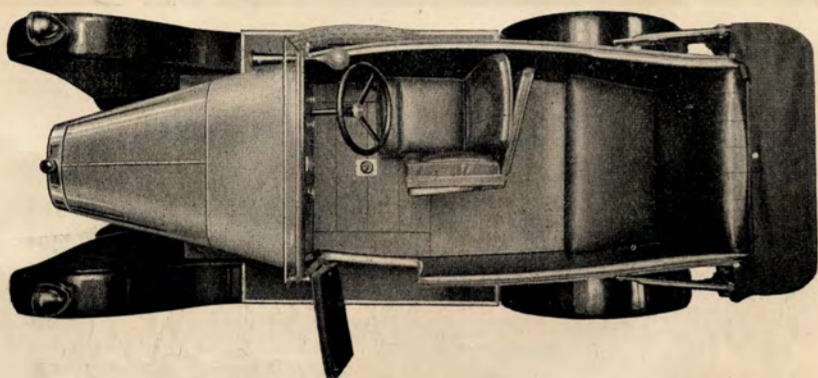
With Starter and
All-weather Equipment.

10-20 h.p. CLYNO
Family Model

4-seater, with Starter and
All-weather Equipment.



THE LIGHT CAR SUPREME



ENGINE.

Four cylinder, monobloc, water-cooled, large diameter side-by-side valves, detachable head, large diameter balanced crankshaft, adjustable tappets, big water spaces round cylinder heads and barrels, light cast iron piston fitted with two rings.

Bore 66 m.m. Stroke 100 m.m.

Brake H.P. 14 h.p. at 1,500 revs. 20 h.p. at 2,950 revs. (by Walker Brake).

R.A.C. rating 10.8 h.p. Tax £11.

LUBRICATION.

By plunger pump, operated direct from cam shaft, forcing oil to timing gear and troughs under big ends. A large oil filter is fitted in the sump and also in the oil filler, which is situated high up on the off side of cylinder block in an extremely accessible position. Oil gauge is conveniently placed on off side of engine.

IGNITION.

High tension magneto fitted in accessible position high up on cylinder block.

COOLING.

Thermo Siphon large highly efficient honeycomb radiator with big head of water carefully designed to give excellent circulation.

CLUTCH.

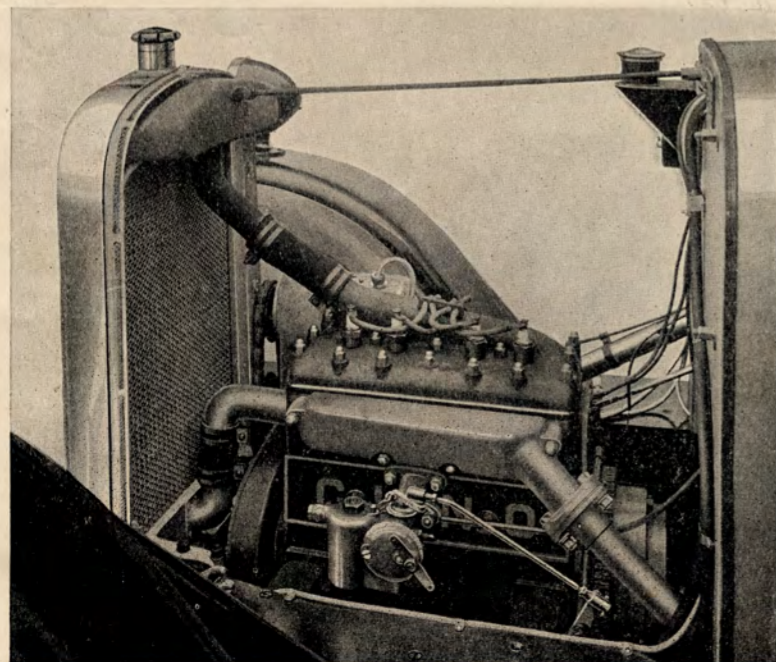
Cone, Fabric lined, large diameter, very smooth in action, disengaged through large diameter ball thrust race.

TRANSMISSION TO GEARBOX.

By propeller shaft fitted with two Hardy Fabric universal joints.

GEARBOX.

Clyno special design, giving three speeds forward and reverse. Fitted with Clyno patent special locking device to prevent the engagement of two gears at once. The Gearbox is floating and anchored on centre cross member of chassis frame by Clyno patent housing, which automatically takes up wear. Gear ratios: 4.3, 7.8 and 14.5 to 1.



THE CLYNO FAMILY MODEL has been designed to meet the requirements of thousands of Motorists who require a good class economical Car for either family or business purposes. The chassis of our latest product is identical with our Standard and De Luxe types, and special attention has been paid to the bodywork as regards convenience and accessibility. The outstanding features of the Clyno Family Model may be summed up as follows:—

1. A road performance second to none.
2. Complete accessibility to all parts of Chassis.
3. Good appearance.
4. Roomy and comfortable.
5. First-class finish.
6. Very economical to run.
7. Complete equipment.

FINAL DRIVE.

Through propeller shaft totally enclosed in torque tube to special bevel in rear axle.

BACK AXLE.

The Clyno Patent back axle is an exceptionally fine example of Light Car engineering, being light but extremely strong. Ball Bearings are used throughout and provision is made to adjust the spiral bevel and take up any wear without taking down the back axle.

SPRINGING.

Quarter elliptic, manufactured by Vickers. The front springs are bolted to special pads on front axle. The rear springs slide on hardened steel rollers in housings on back axle casing, and side wear is taken on hardened steel pads, preventing wear and consequent rattle.

All bolts used in springing system are made of special 60-ton high tensile steel.

STEERING.

Special Clyno design by worm and nut. We claim that this is the finest and lightest steering fitted to any light car on the market at the present time.

FRONT AXLE.

Underslung with provision to take up wear on steering heads.

BRAKES.

Fitted on rear wheels. Exceptionally large diameter: internal expanding, fabric lined, extremely smooth in action and very powerful. Adjustment is provided by special wing nuts, easily accessible on end of brake operating rods.

DIMENSIONS. Overall length 11-ft. 4-in.
 " width 4-ft. 4-in.
 Wheel base 8-ft. 6-in.
 Track 3-ft. 10-in.
 Ground clearance 7-in.
 Weight, 12½-cwt. ready for the road.

PETROL CONSUMPTION.—45 to 50 m.p.g.

OIL CONSUMPTION.—1750 m.p.g.

SPEED.—5 to 55 m.p.h. in top gear.

HILL CLIMBING CAPABILITIES.—Extraordinary, will climb anything.

PETROL TANK.—Capacity, 4-galls., fitted in scuttle. Gravity Feed, with large filter. Filler Cap conveniently situated under bonnet.

PRICE.—Fully equipped with tool kit, pump, horn, jack, spare wheel and tyre, number plates, all-weather equipment opening with door, and hood cover.

COMPLETE WITH STARTER.

£ 238.

WHEELS.

Detachable artillery, 12 spokes, fitted with 710 m.m. × 85 m.m. Tyres.

CONTROLS.

Foot accelerator, Hand control to carburetter and magneto. Foot and R.H. side brake. Central gear change very conveniently situated. All foot pedals are adjustable.

LIGHTING.

Brolt electric dynamo set. The head lamps are sturdily mounted on front wings, and a dimming set is controlled by main switch on instrument board. Dynamo is mounted high up on cylinder block.

STARTING.

Brolt starting set with separate motor and extra large battery with sufficient power to turn engine rapidly even when cold.

PETROL TANK.

Capacity 4 gallons fitted in scuttle. Gravity feed with large filter. Filler Cap conveniently situated under bonnet.

CARRIAGE WORK.

The body is of an exceedingly attractive design, being strong and entirely free from rattles at all speeds. Four adults may be accommodated with comfort. The front seats are adjustable, and every provision is made to give easy access to all parts of the chassis by moving floorboards. Both front seats may be instantly removed by unscrewing two wing nuts. A very large tool box is provided and also a special locker for side curtains. Floor and running boards are covered with rubber matting, and the finish throughout is of the very highest quality. The instrument board is polished mahogany. The large domed wings and metal valances are strongly supported. A large, good quality, one man hood, with hood cover and adjustable wind screen are provided.

